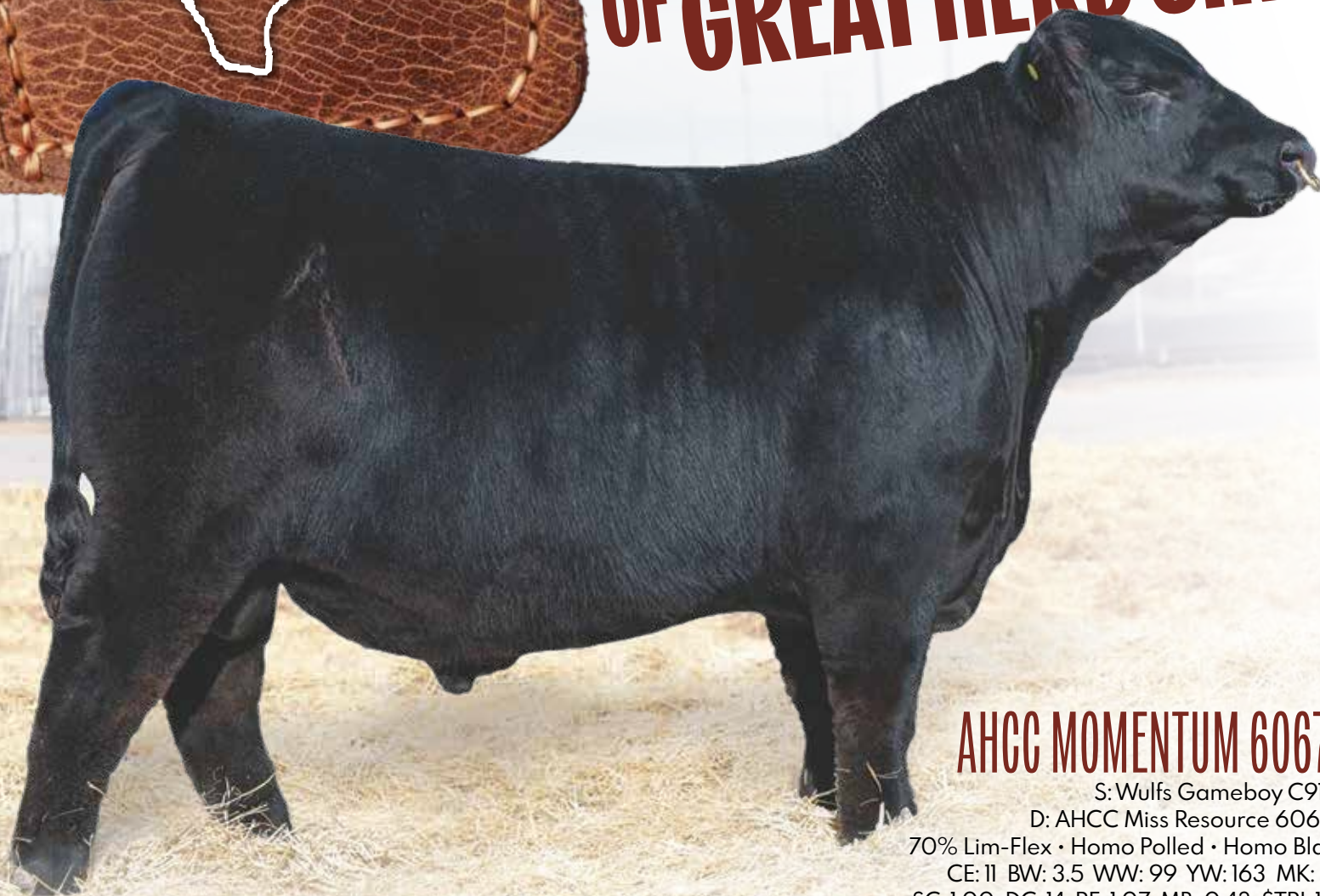




FUCHS
LIMOUSIN

A GREAT HERITAGE OF GREAT HERD SIRES



AHCC MOMENTUM 6067L

S: Wulfs Gameboy C911G
D: AHCC Miss Resource 6067D
70% Lim-Flex • Homo Polled • Homo Black
CE: 11 BW: 3.5 WW: 99 YW: 163 MK: 27
SC: 1.00 DC: 14 RE: 1.07 MB: 0.43 \$TPI: 146

Fuchs Limousin has built a herd around the utilization of great herd sires. Sires with breed leading, balanced performance and progressive genetics secure the foundation of our program. These two young sires will carry on this great heritage.

We welcome your call or visit anytime.

Gary & Susan Fuchs
Stephen, Nathan & Emily
P.O. Box 81 • Cameron, TX 76520
254/482-0611
garyfuchs53@yahoo.com
Stephen Fuchs, manager
254/482-0052
fuchslimousin@gmail.com
www.fuchslimousin.com

AHCC LANDMARK 917L

S: HBRL Gateway 9511G B2F
D: AHCC Miss Earning Power 917G
70% Lim-Flex • Homo Polled • Homo Black
CE: 13 BW: -0.6 WW: 83 YW: 143 MK: 33
SC: 1.10 DC: 13 RE: 0.69 MB: 0.77 \$TPI: 163

Co-owned Wieczorek Limousin.
Semen \$40. Contact Grassroots Genetics, 515-965-1458.

